

OLYMPUS

Your Vision, Our Future

Endo**Therapy**

NEEDLEMASTER

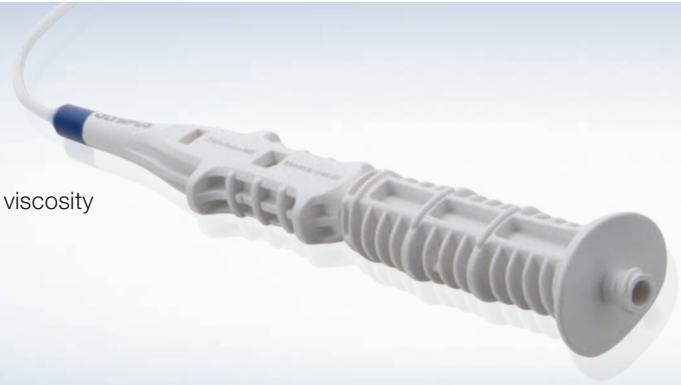
Single-Use Injection Needle



MASTERING ENDOSCOPIC INJECTION

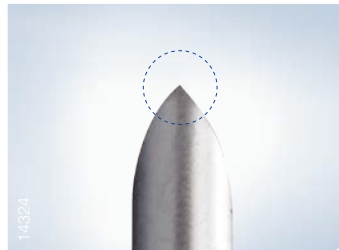
What Are You Looking for in an Endoscopic Injection Needle?

- Easy puncture with less resistance
- Large flow rate and smooth injection – even of liquids with high viscosity
- Single-handed operation
- Longer maintenance of lifting via injection during ESD



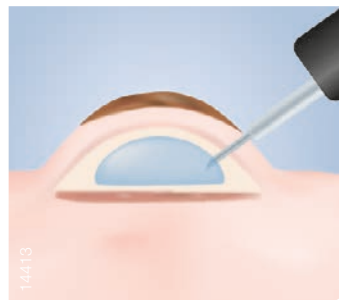
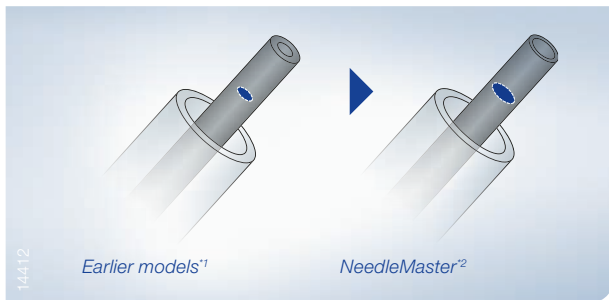
Excellent Puncture Performance

Now featuring a 3-bevel tip, the NeedleMaster is manufactured using new processing technology that has made it possible to sharpen the needle right to the very end. As a result, you'll experience much less resistance during puncturing than with its predecessors.



Improved Injectability

While the outer diameter of the needle remains the same as on earlier models¹, the lumen has been expanded. This allows even high-viscosity liquid to pass through smoothly.



¹ Model name example – NM-200U-0425, ² Model name example – NM-610U-0425

NeedleMaster

You Will Find the Answer in the NeedleMaster

- Superior puncture performance with the new 3-bevel tip
- Improved injectability of high-viscosity liquid due to increased inner lumen
- Ergonomic handle design with a non-slip surface to enable safe single-handed operation
- Slimmer 26G model to reduce leakage of injection solution during ESD



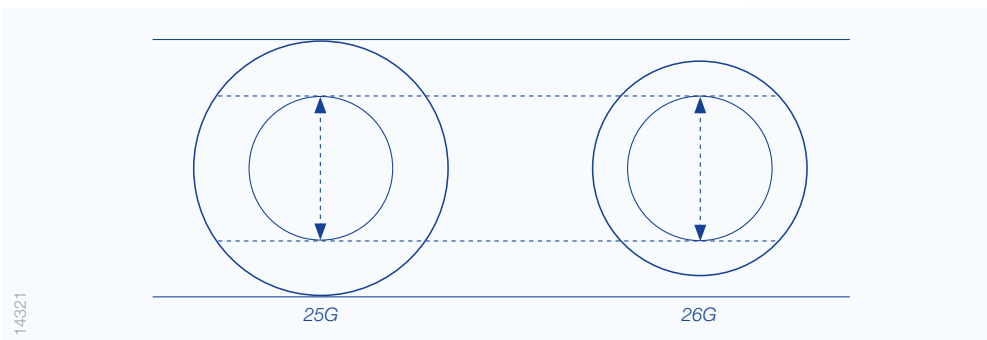
User-Friendly Handle Design

For a better, more secure grip, the handle has been redesigned and now features a roughly textured non-slip surface. The improved grip also facilitates single-handed operation, while helping reduce the force needed to inject high-viscosity liquid.



Slimmer Version Now Available

A thinner 26G model version with a lumen size equivalent to 25G models is now available. As the smaller diameter needle makes a smaller puncture hole, leakage of injected solution is reduced. This could be expected to slow down loss of height in the lifted area during ESD.



NEEDLEMASTER

Single-Use Injection Needle

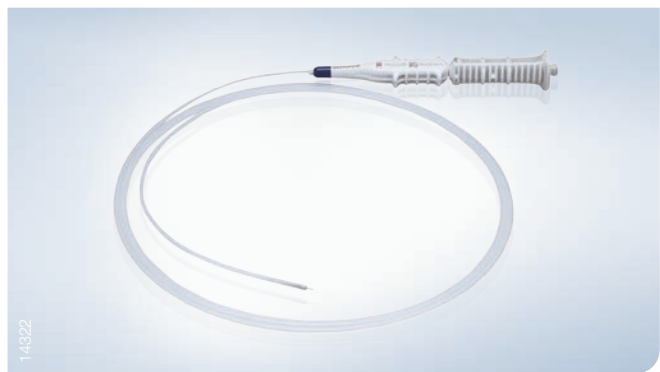
| Specifications | | | | | | | |
|----------------|----------------|----------|------------------------|----------------|--------------|-------------------|--------------|
| Article Name | Article Number | Quantity | Min. Working Channel Ø | Working Length | Needle Bevel | Needle Length (A) | Needle Ø (B) |
| NM-610L-0421 | N5406230 | 5/box | 2.8 mm | 1650 mm | Middle | 4.0 mm | 21G = 0.8 mm |
| NM-600L-0421 | N5405330 | 5/box | 2.8 mm | 1650 mm | Regular | 4.0 mm | 21G = 0.8 mm |
| NM-600L-0621 | N5405530 | 5/box | 2.8 mm | 1650 mm | Regular | 6.0 mm | 21G = 0.8 mm |
| NM-610L-0423 | N5406530 | 5/box | 2.8 mm | 1650 mm | Middle | 4.0 mm | 23G = 0.6 mm |
| NM-600L-0423 | N5405630 | 5/box | 2.8 mm | 1650 mm | Regular | 4.0 mm | 23G = 0.6 mm |
| NM-600L-0523 | N5405730 | 5/box | 2.8 mm | 1650 mm | Regular | 5.0 mm | 23G = 0.6 mm |
| NM-610L-0525 | N5406930 | 5/box | 2.8 mm | 1650 mm | Middle | 5.0 mm | 25G = 0.5 mm |
| NM-600L-0525 | N5406030 | 5/box | 2.8 mm | 1650 mm | Regular | 5.0 mm | 25G = 0.5 mm |
| NM-610L-0426 | N5407130 | 5/box | 2.8 mm | 1650 mm | Middle | 4.0 mm | 26G = 0.4 mm |
| NM-610U-0323 | N5407230 | 5/box | 2.8 mm | 2300 mm | Middle | 3.0 mm | 23G = 0.6 mm |
| NM-610U-0423 | N5407330 | 5/box | 2.8 mm | 2300 mm | Middle | 4.0 mm | 23G = 0.6 mm |
| NM-610U-0523 | N5407430 | 5/box | 2.8 mm | 2300 mm | Middle | 5.0 mm | 23G = 0.6 mm |
| NM-610U-0623 | N5407530 | 5/box | 2.8 mm | 2300 mm | Middle | 6.0 mm | 23G = 0.6 mm |
| NM-610U-1825 | N5407630 | 5/box | 2.8 mm | 2300 mm | Middle | 1.8 mm | 25G = 0.5 mm |
| NM-610U-0425 | N5407830 | 5/box | 2.8 mm | 2300 mm | Middle | 4.0 mm | 25G = 0.5 mm |
| NM-610U-0525 | N5407930 | 5/box | 2.8 mm | 2300 mm | Middle | 5.0 mm | 25G = 0.5 mm |
| NM-610U-0625 | N5408030 | 5/box | 2.8 mm | 2300 mm | Middle | 6.0 mm | 25G = 0.5 mm |
| NM-610U-1826 | N5408130 | 5/box | 2.8 mm | 2300 mm | Middle | 1.8 mm | 26G = 0.4 mm |
| NM-610U-0426 | N5408330 | 5/box | 2.8 mm | 2300 mm | Middle | 4.0 mm | 26G = 0.4 mm |



MB: Middle bevel



RB: Regular bevel



NeedleMaster



Specifications, design, and accessories are subject to change without any notice or obligation on the part of the manufacturer.

OLYMPUS

OLYMPUS EUROPA SE & CO. KG
 Postbox 10 49 08, 20034 Hamburg, Germany
 Wendenstrasse 14-18, 20097 Hamburg, Germany
 Phone: +49 40 23773-0, Fax: +49 40 233765
 www.olympus-europa.com